

IN THE LIFE OF THE CHURCH

SUNDAY, AUGUST 13, 2017



MADEIRA-SILVERWOOD PRESBYTERIAN CHURCH
8000 MIAMI AVE CINCINNATI, OH 45243 513.791.4470
mspc@madeirachurch.org www.madeirachurch.org
24/7 PRAYER REQUEST LINE 513.665.6747
24/7 DIAL-A-PRAYER OF ENCOURAGEMENT 513.791.2345

PRAYER CHANGES THINGS When we pray it is good to remember that God is everything we need and his love is everlasting.

Please pray for Ruth Shawver, Helen Kugel, Lois Stringer, Jean Shepherd, Marilyn Glasgow, Don Fowls, Kay Robinson, Mary Veith, Ruth Maxson, and Jenit Vance.

FLOWERS in the sanctuary this morning are given by Kathy Ashton in memory of her parents, David & Betty Ashton and by Tom Sweets in memory of his mother, Amelia Payne Sweets.

A MINUTE FOR MISSIONS—PARTNERS INDIA

¹⁴ ... And how can they believe in the one of whom they have not heard? And how can they hear without someone preaching to them?

¹⁵ And how can anyone preach unless they are sent? As it is written: "How beautiful are the feet of those who bring good news!" Rom 10:14-15

This morning we welcome, Rev. Ashish Pushkaran, founder of Partners India, who will be speaking at both worship services. Both of Ashish's parents were born in orthodox families in Kerala, South India. His father accepted Christ as a teen after reading a gospel pamphlet he found on the ground. He was persecuted and soon expelled by his family. Ashish's mother, too was driven away by her family after she followed Christ.

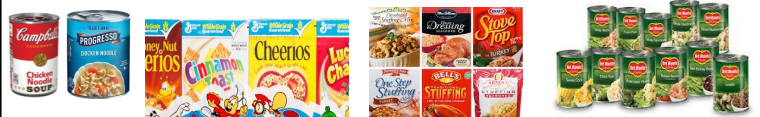
Ashish moved to the United States in 2001 and is an ordained minister of the Gospel through Evangelical Church Alliance in Bradley, Illinois. Ashish and Suvarnamala (Sue) were married in 2003. Sue was born in Hyderabad, South India and immigrated to the United States with her family at age 13. They have three children—sons, Chrisdas Ashish and Luke Vivek and daughter, Diya Hope.

Ashish and Sue both having a passion for missions founded Partners India in 2005. The mission's focus is

- ◆ **Leadership Development**—Train local leaders at Discipleship Center in Madya Pradesh
- ◆ **Evangelism & Church Planting**—once leaders are trained they have no hesitation to go back to their own villages and share the Gospel.
- ◆ **Compassion Projects**—establish Ray of Hope Schools, conduct medical camps and humanitarian efforts; want to start children's home for destitute children in Gwalior.

Partners India is one of the international missions supported by MSPC through your regular giving of tithes and offerings. You can learn more about [Partners India](#) by checking out their website online.

HOLIDAY FOOD RACE The Board of Deacons are continuing their collection of foods for the Thanksgiving and Christmas food boxes. We are in now in "lap 2" of our race to the finish line to collect enough to fill 65 boxes. During the month of August we are asking for donations of



Soups Cereal Stuffing Mix Vegetables

Please place your donations in the designated collection box. Each Sunday, the Deacons will list total number of donations received for each food category!

N.E.E.D.S. NorthEast Emergency Distribution Services

BACK-TO-SCHOOL DRIVE: Today is the deadline for donations. MSPC has been asked to collect ...

- Facial Tissues (*any size box*)
- Ruler
- Folder with 2pocket & 3prong

- ◆ **COMMUNITY FOOD PANTRY:** We have been asked to donate main entrée canned goods such as Beef Stew, Chicken 'n Dumplings, Ravioli, etc.

Thank you for reaching out to help our community. Place all Back-to-School and food donations in the NEEDS collection bin.

FINANCIAL PEACE UNIVERSITY CLASSES WEDNESDAYS: SEPT. 20-NOV. 15 6:30-8:00PM IN CHAPEL



Before the holidays begin, take steps to regain control of your money and secure your financial life by signing up to attend Dave Ramsey's

Financial Peace University (FPU). Learn the easy-to-follow Baby Steps of budgeting, dumping debt, planning for the future, and much more. Taking the course with a small group is a great way to share ideas, be encouraged, and stay motivated. It is strongly recommended that you attend the course with your spouse or other accountability partner. **One FPU membership kit per family is all you need to get started.** The kit through MSPC (group rate) is \$93/kit; or order your kit online at <https://www.daveramsey.com/store>

To register contact Alan Garten (alangarten@gmail.com; or 513-505-0022) or look for the sign-up list on Sunday.



connect



THIS WEEK AT MSPC

S = Sanctuary YM = Youth Ministry YR = Youth Room CR = Choir Room FH = Fellowship Hall * Lower Level

TODAY—AFTERNOON / EVENING

MONDAY — AUGUST 14

- 9:30 am Intercessory Prayer Team (Chapel)
- 9:30 am Kindermusik by Cheryl (Classroom 8*)
- 6:45 pm Board of Deacons (Chapel)
- 7:00 pm Foxhall AA (Fellowship Hall*)

TUESDAY — AUGUST 15

- 11:00 am Worship Arts Planning Team (Chapel)
- 7:00 pm BSA Troop 209 Meeting (FH*)

WEDNESDAY — AUGUST 16

- 10:00 am Golden Ponders Study Group (Chapel)
- 6:00 pm Rehearsal—Chapter 28

THURSDAY — AUGUST 17

- 9:15 am Kindermusik by Lisa (Classroom 8*)
- 10:00 am Women's Study Group (Youth Room)

FRIDAY — AUGUST 18

SATURDAY — AUGUST 19

- 8:00 am Men's Study Group (Work Room)

NEXT SUNDAY — AUGUST 20

- 8:00 am Rehearsal-Chapter 28 (Sanctuary)
- 8:30 am Childcare Newborn-24months (Nursery)
- 9:00 am Contemporary Worship Service (S)

10:00 am "The Chronicles of Narnia" (Chapel)

Note: NO Regular Sunday School classes until our Fall Kick-Off.

**FALL 2017 Sunday School Kick-Off
for All Ages
Sunday, September 10**

11:00 am Traditional Worship Service (S)

Watch your email and/or news bulletins for information on Youth Ministry future events.

ATTN. LADIES: PRESBYTERIAN WOMEN of the Presbytery of Cincinnati

The Summer Gathering

Saturday, August 26; 9am-12pm

@ Pleasant Run Presbyterian Church

Registration, fellowship and continental breakfast begin at 9am (\$3/breakfast). The program feature is an intro to Horizon's bible study "Cloud of Witnesses." Bring donations of personal care items and paper products for Practical Grace Non-food Pantry.

Pick up a copy of the June 2017 issue of *Presby-Woman* (narthex literature rack) to learn more about this organization.

LOST & FOUND Are you missing something which you might have lost at the church? Check out the Lost and Found bin the the narthex closet. Items not claimed by August 31 will be donated to Matthew 25 Ministries.